



# KT-260

## POWER RELAY

KYOTA



45.8 x 45.0 x 64.0

### CONTACT DATA

Contact Form	1A/1B/1C
Contact Material	AgCdO, AgSnO <sub>2</sub>
Contact Rating Rated Voltage	60A 250VAC/ 30VDC
Coil Power	DC2.0W / AC2.5VA
Contact Resistance	≤100mΩ Max (1A 6VDC)

### COIL DATA

at 25°C

#### DC

Nominal Voltage (VDC)	Operate Voltage (VDC)	Release Voltage (VDC)	Coil Resistance (Ω ±10%)
6	4.8	0.6	14.4
12	9.6	1.2	57.6
24	19.2	2.4	230
48	38.4	4.8	920
60	48	6.0	1440
110	88	11.0	4840

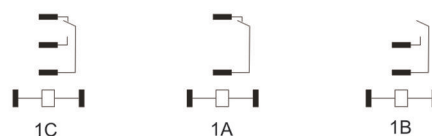
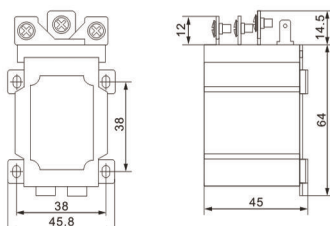
### CHARACTERISTICS DATA

Insulation Resistance	≥1000MΩ (500VDC)
Dielectric Strength	Between Open Contacts ≥1200VAC 1min
	Between Contact and Coil ≥2500VAC 1min
Operate Time	≤25ms
Release Time	25ms
Terminal Type	Screw Mounting
Weight	Approx 217g

#### AC

Nominal Voltage (VAC)	Operate Voltage (VAC)	Release Voltage (VAC)	Coil Resistance (Ω ±10%)
6	4.8	1.8	14.4
12	9.6	3.6	57
24	19.2	7.2	230
48	38.4	14.4	921
110	88	36	5000
220	176	72	19400
240	176	72	23070

### OUTLINE DIMENSIONS, WIRING DIAGRAM AND LAYOUT



#### CAUTION:

1. The use of any coil voltage less than the rated coil voltage will compromise the operation of the relay.
2. Maximum operating voltage and minimum release voltage are for test purposes only and are not to be used as design criteria.



a2zelectronic.com

Sourcing Simplified

