



Winstar Display Co., LTD



## SPECIFICATION

CUSTOMER : \_\_\_\_\_

MODULE NO.: WH2004A-TMI-JT#

APPROVED BY:

( FOR CUSTOMER USE ONLY )

PCB VERSION:

DATA:

SALES BY	APPROVED BY	CHECKED BY	PREPARED BY
----------	-------------	------------	-------------

--	--	--	--

ISSUED DATE:

MODLE NO?

Winstar Display Co., LTD



RECORDS OF REVISION

DOC. FIRST ISSUE

VERSION	DATE	REVISD PAGE NO. <b>SUMMARY</b>
---------	------	--------------------------------

0	2006.02.15	First issue
---	------------	-------------

# Contents

- 1.Module Classification Information
- 2.Precautions in use of LCD Modules
- 3.General Specification
- 4.Absolute Maximum Ratings
- 5.Electrical Characteristics
- 6.Optical Characteristics
- 7.Interface Pin Function
- 8.Contour Drawing & Block Diagram
- 9.Function Description
- 10.Character Generator ROM Pattern
- 11.Instruction Table
- 12.Timing Characteristics
- 13.Initializing of LCM
- 14.Reliability
- 15.Backlight Information
16. Inspection specification
- 17.Material List of Components for RoHs

## 1. Module Classification Information

W H 2 0 0 4 A - T M I - JT#  
 ① ②            ③            ④            ⑤ ⑥ ⑦            ⑧

- ① Brand WINSTAR DISPLAY CORPORATION
- ② Display Type: H? Character Type, G? Graphic Type
- ③ Display Font: Character 20 words, 4Lines.
- ④ Model serials no.
- ⑤ Backlight Type:        N? Without backlight  
                                   B? EL, Blue green                    A? LED, Amber  
                                   D? EL, Green                            R? LED, Red  
                                   W? EL, White                            O? LED, Orange  
                                   F? CCFL, White                        G? LED, Green  
                                   Y? LED, Yellow Green                T? LED, White
- ⑥ LCD Mode:            B? TN Positive, Gray                T? FSTN Negative  
                                   N? TN Negative,  
                                   G? STN Positive, Gray  
                                   Y? STN Positive, Yellow Green  
                                   M? STN Negative, Blue  
                                   F? FSTN Positive
- ⑦ LCD Polarize        A? Reflective, N.T, 6:00            H? Transflective, W.T,6:00  
   Type/ Temperature D? Reflective, N.T, 12:00            K? Transflective, W.T,12:00  
   range/ View            G? Reflective, W. T, 6:00            C? Transmissive, N.T,6:00  
   direction                J? Reflective, W. T, 12:00            F? Transmissive, N.T,12:00  
                                   B? Transflective, N.T,6:00            I? Transmissive, W. T, 6:00  
                                   E? Transflective, N.T,12:00        L? Transmissive, W.T,12:00
- ⑧ Special Code        JT : English and Japanese standard font  
                                   # :Lead - Free

## **2. Precautions in use of LCD Modules**

- (1) Avoid applying excessive shocks to the module or making any alterations or modifications to it.
- (2) Don't make extra holes on the printed circuit board, modify its shape or change the components of LCD module.
- (3) Don't disassemble the LCM.
- (4) Don't operate it above the absolute maximum rating.
- (5) Don't drop, bend or twist LCM.
- (6) Soldering: only to the I/O terminals.
- (7) Storage: please storage in anti-static electricity container and clean environment.

## **3. General Specification**

<b>Item</b>	<b>Dimension</b>	<b>Unit</b>
Number of Characters	20 characters x 4Lines	-
Module dimension	98.0 x 60.0 x 13.6(MAX)	mm
View area	77.0 x 25.2	mm
Active area	70.4 x 20.8	mm
Dot size	0.55 x 0.55	mm
Dot pitch	0.60 x 0.60	mm
Character size	2.95 x 4.75	mm
Character pitch	3.55 x 5.35	mm
LCD type	STN Negative, Blue , Transmissive,	
Duty	1/16	
View direction	6 o'clock	
Backlight Type	LED White	

## 4. Absolute Maximum Ratings

Item	Symbol	Min	Typ	Max	Unit
Operating Temperature	$T_{OP}$	-20	-	+70	?
Storage Temperature	$T_{ST}$	-30	-	+80	?
Input Voltage	$V_I$	$V_{SS}$	-	$V_{DD}$	V
Supply Voltage For Logic	$V_{DD}-V_{SS}$	-0.3	-	7	V
Supply Voltage For LCD	$V_{DD}-V_0$	-0.3	-	13	V

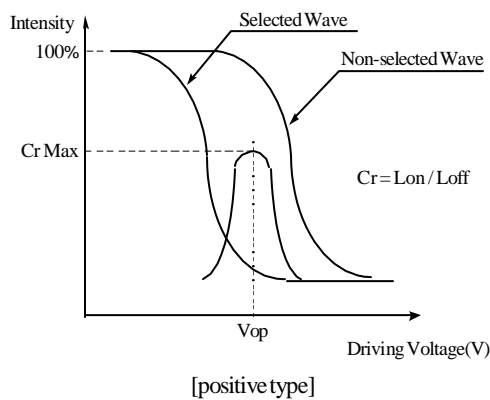
## 5. Electrical Characteristics

Item	Symbol	Condition	Min	Typ	Max	Unit
Supply Voltage For Logic	$V_{DD}-V_{SS}$	-	4.5	5.0	5.5	V
Supply Voltage For LCD	$V_{DD}-V_0$	$T_a=-20?$	-	-	5.7	V
		$T_a=25?$	-	4.5	-	V
		$T_a=70?$	3.8	-	-	V
Input High Volt.	$V_{IH}$	-	$0.7 V_{DD}$	-	$V_{DD}$	V
Input Low Volt.	$V_{IL}$	-	0	-	0.6	V
Output High Volt.	$V_{OH}$	-	3.9	-	-	V
Output Low Volt.	$V_{OL}$	-	-	-	0.4	V
Supply Current	$I_{DD}$	$V_{DD}=5V$	1.2	1.6	2.0	mA

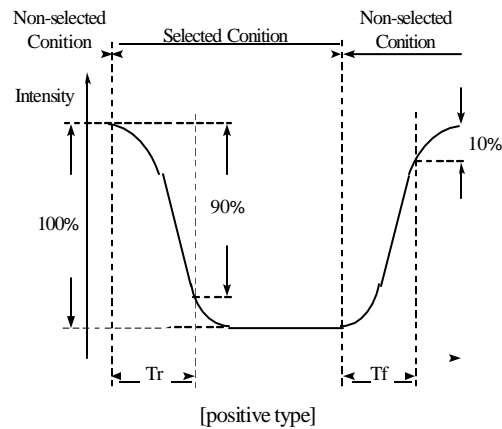
## 6. Optical Characteristics

Item	Symbol	Condition	Min	Typ	Max	Unit
View Angle	(V)?	CR? 2	20	-	40	deg
	(H)f	CR? 2	-30	-	30	deg
Contrast Ratio	CR	-	-	3	-	-
Response Time	T rise	-	-	150	200	ms
	T fall	-	-	150	200	ms

### Definition of Operation Voltage (Vop)



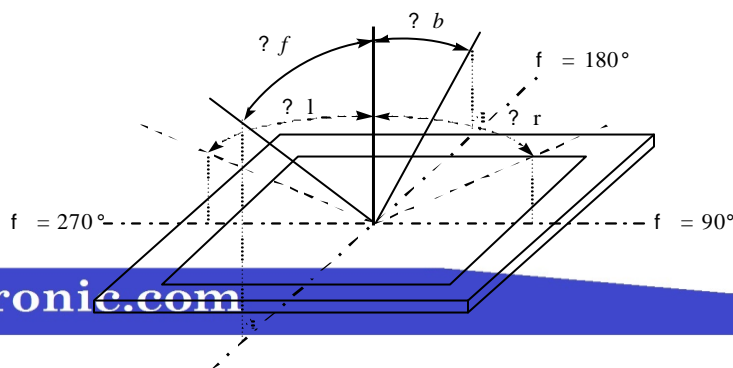
### Definition of Response Time (Tr, Tf)



### Conditions :

Operating Voltage : Vop      Viewing Angle(? , f ) : 0°, 0°  
 Frame Frequency : 64 HZ      Driving Waveform : 1/N duty , 1/a bias

### Definition of viewing angle(CR? 2)



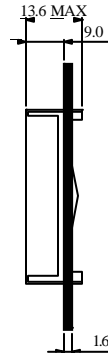
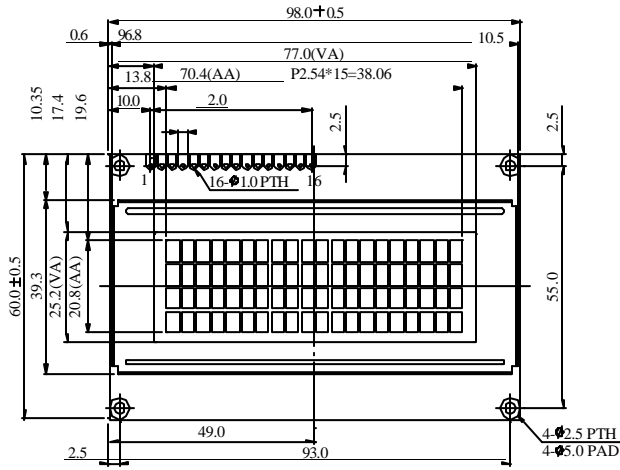


$f = 0^\circ$

## 7. Interface Pin Function

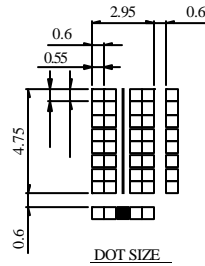
Pin No.	Symbol	Level	Description
1	V <sub>SS</sub>	0V	Ground
2	V <sub>DD</sub>	5.0V	Supply Voltage for logic
3	VO	(Variable)	Operating voltage for LCD
4	RS	H/L	H: DATA, L: Instruction code
5	R/W	H/L	H: Read(MPU? Module) L: Write(MPU? Module)
6	E	H,H? L	Chip enable signal
7	DB0	H/L	Data bus line
8	DB1	H/L	Data bus line
9	DB2	H/L	Data bus line
10	DB3	H/L	Data bus line
11	DB4	H/L	Data bus line
12	DB5	H/L	Data bus line
13	DB6	H/L	Data bus line
14	DB7	H/L	Data bus line
15	A	-	Power supply for B/L(+)
16	K	-	Power supply for B/L(-)

## 8. Contour Drawing & Block Diagram



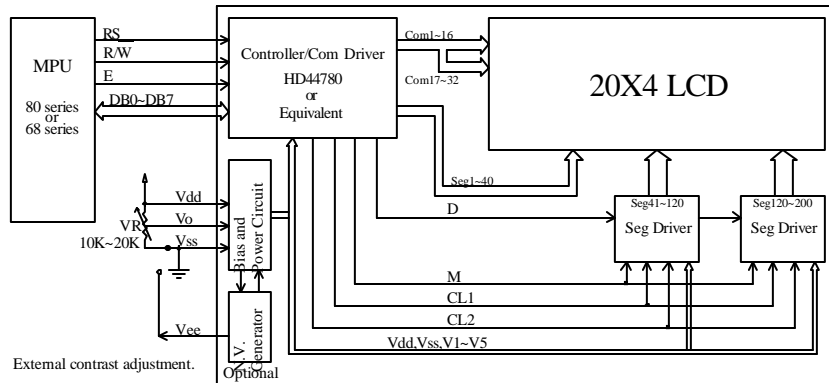
LED B/L

Pin No.	SYMBOL
1	V <sub>SS</sub>
2	V <sub>DD</sub>
3	V <sub>O</sub>
4	RS
5	R/W
6	E
7	DB0
8	DB1
9	DB2
10	DB3
11	DB4
12	DB5
13	DB6
14	DB7
15	A
16	K



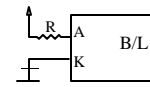
DOT SIZE

The non-specified tolerance of dimension is  $\pm 0.3$ mm.

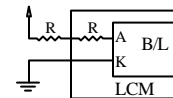


### LED B/L Drive Method

1. Drive from A,K

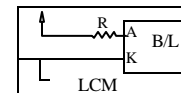


2. Drive from pin15, pin16



(Will never get V<sub>ee</sub> output from pin15)

3. Drive from V<sub>DD</sub>,V<sub>SS</sub>



(Contrast performance may go down.)

00	01	02	03	04	05	06	07	08	09	0A	0B	0C	0D	0E	0F	10	11	12	13
40	41	42	43	44	45	46	47	48	49	4A	4B	4C	4D	4E	4F	50	51	52	53
14	15	16	17	18	19	1A	1B	1C	1D	1E	1F	20	21	22	23	24	25	26	27
54	55	56	57	58	59	5A	5B	5C	5D	5E	5F	60	61	62	63	64	65	66	67

Character located 1 2 3 4 5 6 7 8 9 10 11 12 13 14 15 16 17 18 19 20  
DDRAM address  
DDRAM address  
DDRAM address  
DDRAM address

## 9. Function Description

The LCD display Module is built in a LSI controller, the controller has two 8-bit registers, an instruction register (IR) and a data register (DR).

The IR stores instruction codes, such as display clear and cursor shift, and address information for display data RAM (DDRAM) and character generator (CGRAM). The IR can only be written from the MPU. The DR temporarily stores data to be written or read from DDRAM or CGRAM. When address information is written into the IR, then data is stored into the DR from DDRAM or CGRAM. By the register selector (RS) signal, these two registers can be selected.

RS	R/W	Operation
0	0	IR write as an internal operation (display clear, etc.)
0	1	Read busy flag (DB7) and address counter (DB0 to DB7)
1	0	Write data to DDRAM or CGRAM (DR to DDRAM or CGRAM)
1	1	Read data from DDRAM or CGRAM (DDRAM or CGRAM to DR)

### Busy Flag (BF)

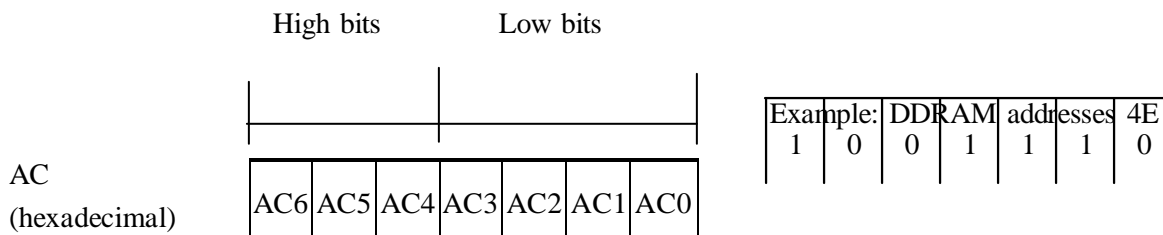
When the busy flag is 1, the controller LSI is in the internal operation mode, and the next instruction will not be accepted. When RS=0 and R/W=1, the busy flag is output to DB7. The next instruction must be written after ensuring that the busy flag is 0.

### Address Counter (AC)

The address counter (AC) assigns addresses to both DDRAM and CGRAM

### Display Data RAM (DDRAM)

This DDRAM is used to store the display data represented in 8-bit character codes. Its extended capacity is 80×8 bits or 80 characters. Below figure is the relationships between DDRAM addresses and positions on the liquid crystal display.



Display position DDRAM address

1	2	3	4	5	6	7	8	9	10	11	12	13	14	15	16	17	18	19	20
00	01	02	03	04	05	06	07	08	09	0A	0B	0C	0D	0E	0F	10	11	12	13
40	41	42	43	44	45	46	47	48	49	4A	4B	4C	4D	4E	4F	50	51	52	53

2-Line by 20-Character Display

### Character Generator ROM (CGROM)

The CGROM generate 5×8 dot or 5×10 dot character patterns from 8-bit character codes. See Table 2.

### Character Generator RAM (CGRAM)

In CGRAM, the user can rewrite character by program. For 5×8 dots, eight character patterns can be written, and for 5×10 dots, four character patterns can be written.

Write into DDRAM the character code at the addresses shown as the left column of table 1. To show the character patterns stored in CGRAM.



# 10. Character Generator ROM Pattern

Table.2

Upper 4 bit Lower 4 bit	LLLL	LLLH	LLHL	LLHH	LHLL	LHLH	LHHL	LHHH	HLLL	HLLH	HLHL	HLHH	HHLL	HHLH	HHHL	HHHH
LLLL	CG RAM (1)			0	1	2	3	4				5	6	7	8	9
LLLH	(2)		!	0	1	2	3	4			.	5	6	7	8	9
LLHL	(3)		"	0	1	2	3	4			^	5	6	7	8	9
LLHH	(4)		#	0	1	2	3	4			_	5	6	7	8	9
LHLL	(5)		\$	0	1	2	3	4			~	5	6	7	8	9
LHLH	(6)		%	0	1	2	3	4			°	5	6	7	8	9
LHHL	(7)		&	0	1	2	3	4			±	5	6	7	8	9
LHHH	(8)		'	0	1	2	3	4			²	5	6	7	8	9
HLLL	(1)		(	0	1	2	3	4			³	5	6	7	8	9
HLLH	(2)		)	0	1	2	3	4			´	5	6	7	8	9
HLHL	(3)		*	0	1	2	3	4			µ	5	6	7	8	9
HLHH	(4)		+	0	1	2	3	4			¶	5	6	7	8	9
HHLL	(5)		,	0	1	2	3	4			·	5	6	7	8	9
HHLH	(6)		-	0	1	2	3	4			¸	5	6	7	8	9
HHHL	(7)		.	0	1	2	3	4			¹	5	6	7	8	9
HHHH	(8)		/	0	1	2	3	4			º	5	6	7	8	9



## 11. Instruction Table

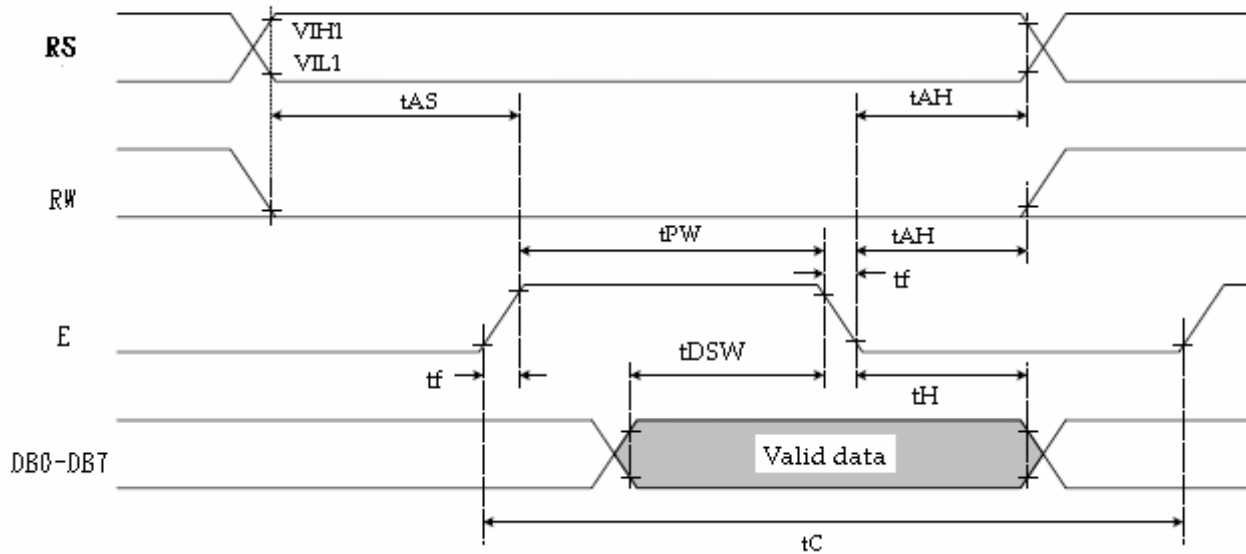
Instruction	Instruction Code										Description	Execution time (fosc=270Khz)	
	RS	R/W	DB7	DB6	DB5	DB4	DB3	DB2	DB1	DB0			
Clear Display	0	0	0	0	0	0	0	0	0	1	Write "00H" to DDRAM and set DDRAM address to "00H" from AC	1.53ms	
Return Home	0	0	0	0	0	0	0	0	0	1	-	Set DDRAM address to "00H" from AC and return cursor to its original position if shifted. The contents of DDRAM are not changed.	1.53ms
Entry Mode Set	0	0	0	0	0	0	0	1	I/D	SH	Assign cursor moving direction and enable the shift of entire display.	39μ s	
Display ON/OFF Control	0	0	0	0	0	0	1	D	C	B	Set display (D), cursor (C), and blinking of cursor (B) on/off control bit.	39μ s	
Cursor or Display Shift	0	0	0	0	0	1	S/C	R/L	-	-	Set cursor moving and display shift control bit, and the direction, without changing of DDRAM data.	39μ s	
Function Set	0	0	0	0	1	DL	N	F	-	-	Set interface data length (DL:8-bit/4-bit), numbers of display line (N:2-line/1-line)and, display font type (F:5×11 dots/5×8 dots)	39μ s	
Set CGRAM Address	0	0	0	1	AC5	AC4	AC3	AC2	AC1	AC0	Set CGRAM address in address counter.	39μ s	
Set DDRAM Address	0	0	1	AC6	AC5	AC4	AC3	AC2	AC1	AC0	Set DDRAM address in address counter.	39μ s	
Read Busy Flag and Address	0	1	BF	AC6	AC5	AC4	AC3	AC2	AC1	AC0	Whether during internal operation or not can be known by reading BF. The contents of address counter can also be read.	0μ s	
Write Data to RAM	1	0	D7	D6	D5	D4	D3	D2	D1	D0	Write data into internal RAM (DDRAM/CGRAM).	43μ s	
Read Data from RAM	1	1	D7	D6	D5	D4	D3	D2	D1	D0	Read data from internal RAM (DDRAM/CGRAM).	43μ s	

\* "": don't care

## 12. Timing Characteristics

### 12.1 Write Operation

- Writing data from MPU

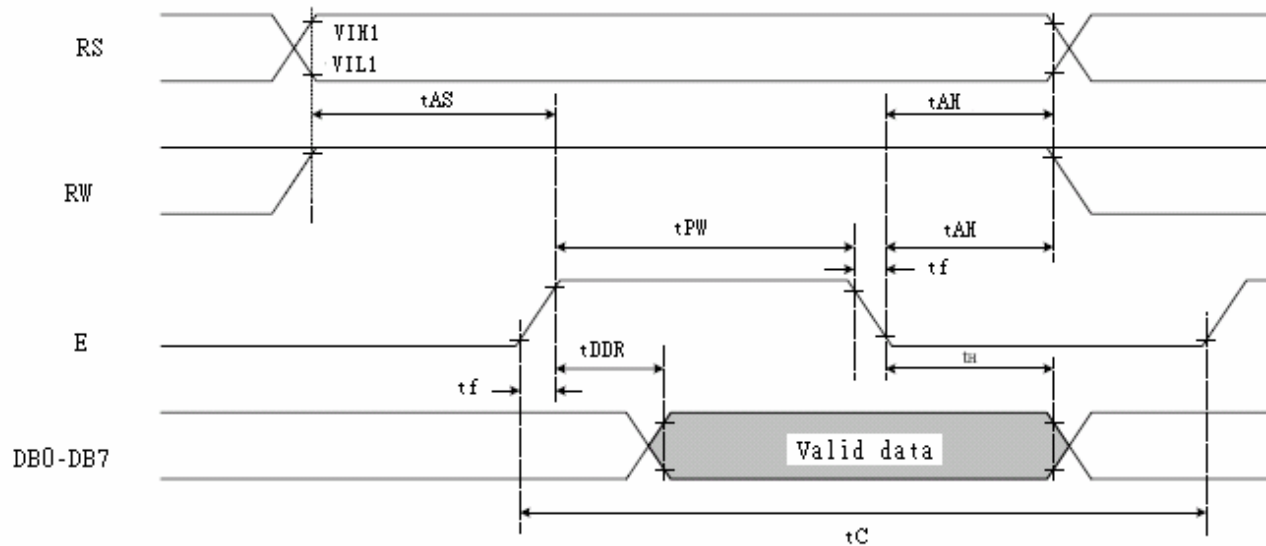


$T_a=25^\circ$  ,  $V_{DD}=5.0\pm 0.5V$

Item	Symbol	Min	Typ	Max	Unit
Enable cycle time	$T_C$	1200	-	-	ns
Enable pulse width	$T_{PW}$	140	-	-	ns
Enable rise/fall time	$T_R, T_F$	-	-	25	ns
Address set-up time (RS, R/W to E)	$t_{AS}$	0	-	-	ns
Address hold time	$t_{AH}$	10	-	-	ns
Data set-up time	$t_{DSW}$	40	-	-	ns
Data hold time	$t_H$	10	-	-	ns

## 12.2 Read Operation

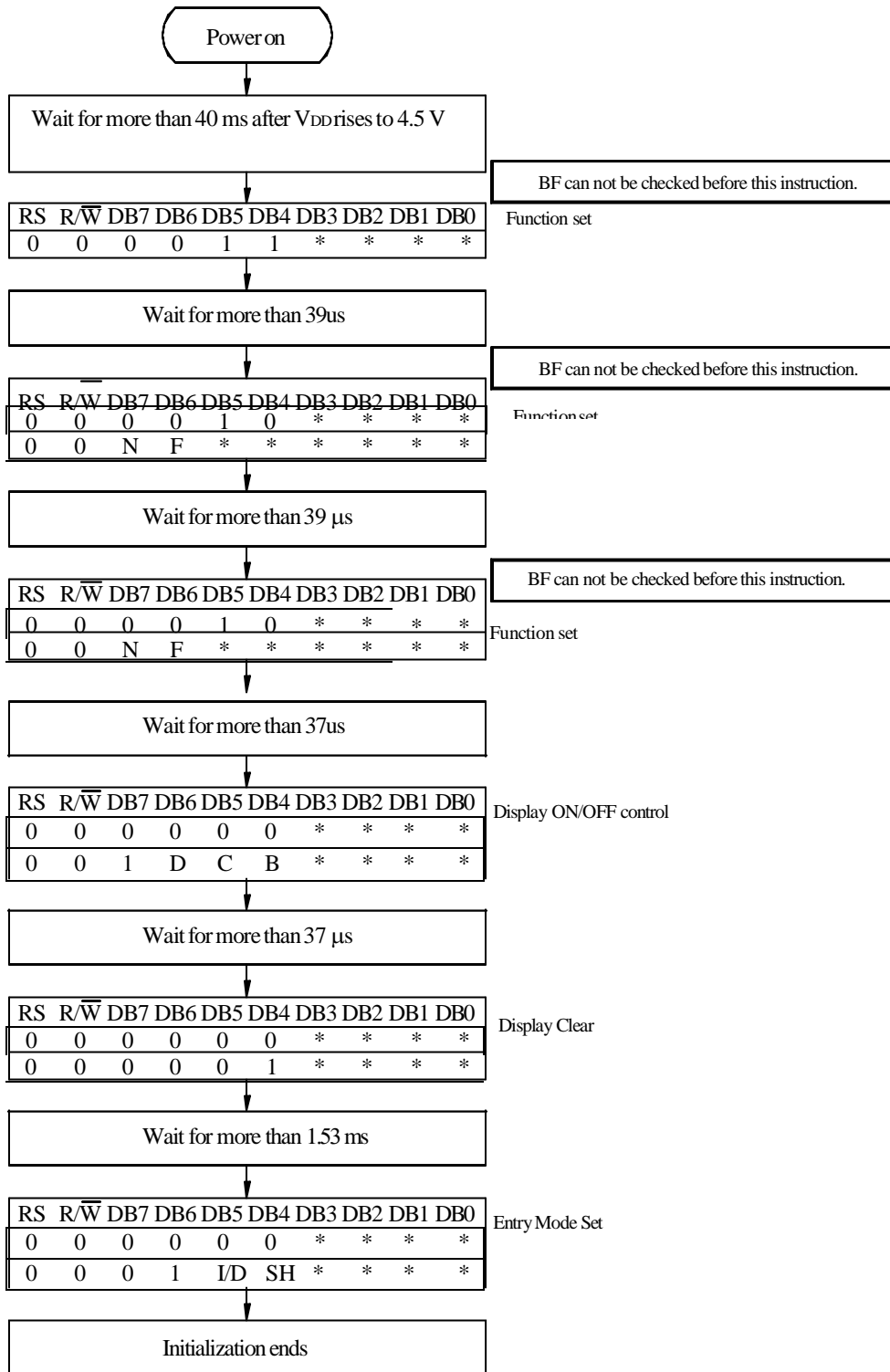
- Reading data from ST7066U

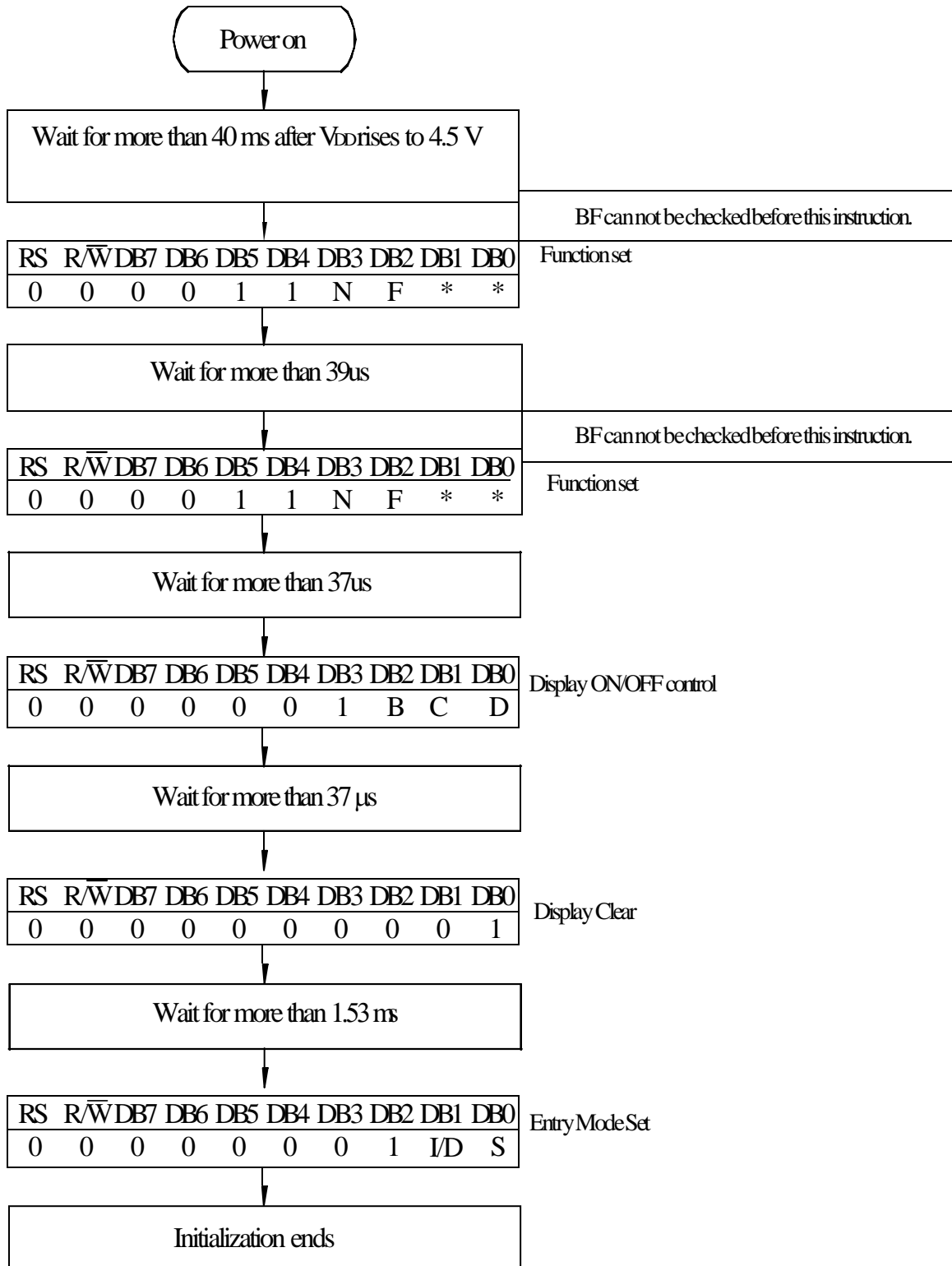


$T_a=25^\circ\text{C}$ ,  $V_{DD}=5.0\pm 0.5\text{V}$

Item	Symbol	Min	Typ	Max	Unit
Enable cycle time	$T_C$	1200	-	-	ns
Enable pulse width (high level)	$T_{PW}$	140	-	-	ns
Enable rise/fall time	$T_R, T_F$	-	-	25	ns
Address set-up time (RS, R/W to E)	$t_{AS}$	0	-	-	ns
Address hold time	$t_{AH}$	10	-	-	ns
Data delay time	$t_{DDR}$	-	-	100	ns
Data hold time	$t_H$	10	-	-	ns

### 13. Initializing of LCM

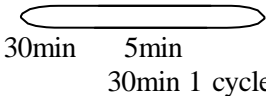




8-Bit Inerface

## 14. Reliability

Content of Reliability Test (wide temperature, -20? ~70? )

Environmental Test			
Test Item	Content of Test	Test Condition	Note
High Temperature storage	Endurance test applying the high storage temperature for a long time.	80? 200hrs	2
Low Temperature storage	Endurance test applying the high storage temperature for a long time.	-30? 200hrs	1,2
High Temperature Operation	Endurance test applying the electric stress (Voltage & Current) and the thermal stress to the element for a long time.	70? 200hrs	—
Low Temperature Operation	Endurance test applying the electric stress under low temperature for a long time.	-20? 200hrs	1
High Temperature/ Humidity Operation	The module should be allowed to stand at 60? ? ,90%RH max For 96hrs under no-load condition excluding the polarizer, Then taking it out and drying it at normal temperature.	60? ,90%RH 96hrs	1,2
Thermal shock resistance	The sample should be allowed stand the following 10 cycles of operation -20?    25?    70?  30min    5min 30min 1 cycle	-20? /70? 10 cycles	—
Vibration test	Endurance test applying the vibration during transportation and using.	Total fixed amplitude : 15mm Vibration Frequency : 10~55Hz One cycle 60 seconds to 3 directions of X,Y,Z for            Each 15 minutes	3
Static electricity test	Endurance test applying the electric stress to the terminal.	VS=800V,RS=1.5k O CS=100pF 1 time	—

**Note1:** No dew condensation to be observed.

**Note2:** The function test shall be conducted after 4 hours storage at the normal Temperature and humidity after remove from the test chamber.

**Note3: Vibration test will be conducted to the product itself without putting it in a container.**

## 15. Backlight Information

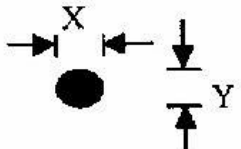
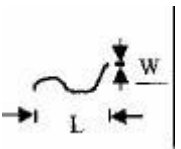
### Specification

PARAMETER	SYMBOL	MIN	TYP	MAX	UNIT	TEST CONDITION
Supply Current	I <sub>LED</sub>	50	60	75	mA	V=3.5V
Supply Voltage	V	3.4	3.5	3.6	V	-
Reverse Voltage	V <sub>R</sub>	-	-	5	V	-
Luminous Intensity	I <sub>V</sub>	200	250	-	CD/M <sup>2</sup>	I <sub>LED</sub> =60mA
Life Time	-	-	50K	-	Hr.	I <sub>LED</sub> ? 60mA
Color	White					

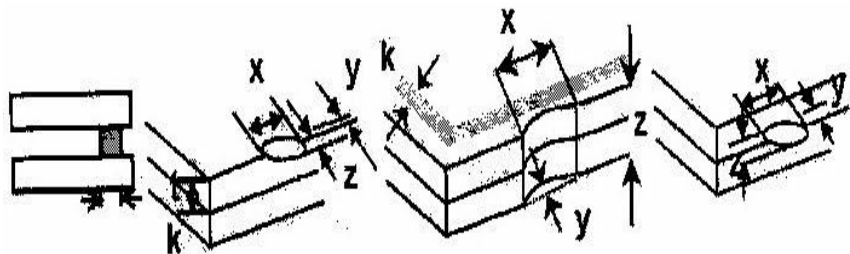
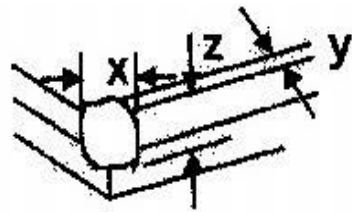
**Note: The LED of B/L is drive by current only, drive voltage is for reference only. drive voltage can make driving current under safety area (current between minimum and maximum).**

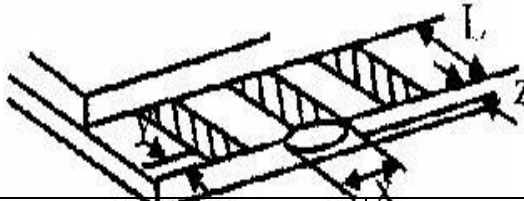
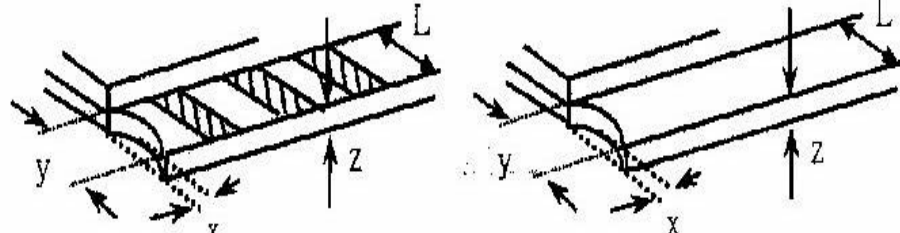
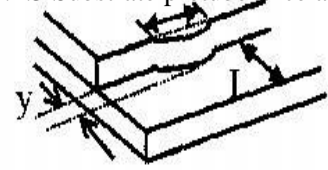


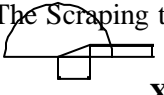
### 16. Inspection specification

NO	Item	Criterion	AQL												
01	Electrical Testing	1.1 Missing vertical, horizontal segment, segment contrast defect. 1.2 Missing character , dot or icon. 1.3 Display malfunction. 1.4 No function or no display. 1.5 Current consumption exceeds product specifications. 1.6 LCD viewing angle defect. 1.7 Mixed product types. 1.8 Contrast defect.	0.65												
02	Black or white spots on LCD (display only)	2.1 White and black spots on display ? 0.25mm, no more than three white or black spots present. 2.2 Densely spaced: No more than two spots or lines within 3mm	2.5												
03	LCD black spots, white spots, contamination (non-display)	3.1 Round type : As following drawing $F = (x + y) / 2$  <table border="1" data-bbox="868 1039 1307 1260"> <thead> <tr> <th>SIZE</th> <th>Acceptable Q TY</th> </tr> </thead> <tbody> <tr> <td><math>F \leq 0.10</math></td> <td>Accept no dense</td> </tr> <tr> <td><math>0.10 &lt; F \leq 0.20</math></td> <td>2</td> </tr> <tr> <td><math>0.20 &lt; F \leq 0.25</math></td> <td>1</td> </tr> <tr> <td><math>0.25 &lt; F</math></td> <td>0</td> </tr> </tbody> </table>	SIZE	Acceptable Q TY	$F \leq 0.10$	Accept no dense	$0.10 < F \leq 0.20$	2	$0.20 < F \leq 0.25$	1	$0.25 < F$	0	2.5		
		SIZE	Acceptable Q TY												
$F \leq 0.10$	Accept no dense														
$0.10 < F \leq 0.20$	2														
$0.20 < F \leq 0.25$	1														
$0.25 < F$	0														
3.2 Line type : (As following drawing)  <table border="1" data-bbox="706 1323 1307 1554"> <thead> <tr> <th>Length</th> <th>Width</th> <th>Acceptable Q TY</th> </tr> </thead> <tbody> <tr> <td>---</td> <td><math>W \leq 0.02</math></td> <td>Accept no dense</td> </tr> <tr> <td><math>L \leq 3.0</math></td> <td><math>0.02 &lt; W \leq 0.03</math></td> <td rowspan="2">2</td> </tr> <tr> <td><math>L \leq 2.5</math></td> <td><math>0.03 &lt; W \leq 0.05</math></td> </tr> <tr> <td>---</td> <td><math>0.05 &lt; W</math></td> <td>As round type</td> </tr> </tbody> </table>	Length	Width	Acceptable Q TY	---	$W \leq 0.02$	Accept no dense	$L \leq 3.0$	$0.02 < W \leq 0.03$	2	$L \leq 2.5$	$0.03 < W \leq 0.05$	---	$0.05 < W$	As round type	2.5
Length	Width	Acceptable Q TY													
---	$W \leq 0.02$	Accept no dense													
$L \leq 3.0$	$0.02 < W \leq 0.03$	2													
$L \leq 2.5$	$0.03 < W \leq 0.05$														
---	$0.05 < W$	As round type													
04	Polarizer bubbles	If bubbles are visible, judge using black spot specifications, not easy to find, must check in <table border="1" data-bbox="836 1690 1307 1911"> <thead> <tr> <th>Size F</th> <th>Acceptable Q TY</th> </tr> </thead> <tbody> <tr> <td><math>F \leq 0.20</math></td> <td>Accept no dense</td> </tr> <tr> <td><math>0.20 &lt; F \leq 0.50</math></td> <td>3</td> </tr> <tr> <td><math>0.50 &lt; F \leq 1.00</math></td> <td>2</td> </tr> <tr> <td><math>1.00 &lt; F</math></td> <td>0</td> </tr> </tbody> </table>	Size F	Acceptable Q TY	$F \leq 0.20$	Accept no dense	$0.20 < F \leq 0.50$	3	$0.50 < F \leq 1.00$	2	$1.00 < F$	0	2.5		
Size F	Acceptable Q TY														
$F \leq 0.20$	Accept no dense														
$0.20 < F \leq 0.50$	3														
$0.50 < F \leq 1.00$	2														
$1.00 < F$	0														

	specify direction.	Total Q TY	3	
--	--------------------	------------	---	--

NO	Item	Criterion	AQL																		
05	Scratches	Follow NO.3 LCD black spots, white spots, contamination																			
06	Chipped glass	<p>Symbols Define:                      x: Chip length      y: Chip width      z: Chip thickness                      k: Seal width      t: Glass thickness      a: LCD side length                      L: Electrode pad length:</p> <p>6.1 General glass chip :                      6.1.1 Chip on panel surface and crack between panels:</p>  <table border="1" data-bbox="462 871 1307 1018"> <thead> <tr> <th>z: Chip thickness</th> <th>y: Chip width</th> <th>x: Chip length</th> </tr> </thead> <tbody> <tr> <td><math>Z \leq 1/2t</math></td> <td>Not over viewing area</td> <td><math>x \leq 1/8a</math></td> </tr> <tr> <td><math>1/2t &lt; z \leq 2t</math></td> <td>Not exceed 1/3k</td> <td><math>x \leq 1/8a</math></td> </tr> </tbody> </table> <p>? If there are 2 or more chips, x is total length of each chip.</p> <p>6.1.2 Corner crack:</p>  <table border="1" data-bbox="462 1417 1307 1564"> <thead> <tr> <th>z: Chip thickness</th> <th>y: Chip width</th> <th>x: Chip length</th> </tr> </thead> <tbody> <tr> <td><math>Z \leq 1/2t</math></td> <td>Not over viewing area</td> <td><math>x \leq 1/8a</math></td> </tr> <tr> <td><math>1/2t &lt; z \leq 2t</math></td> <td>Not exceed 1/3k</td> <td><math>x \leq 1/8a</math></td> </tr> </tbody> </table> <p>? If there are 2 or more chips, x is the total length of each chip.</p>	z: Chip thickness	y: Chip width	x: Chip length	$Z \leq 1/2t$	Not over viewing area	$x \leq 1/8a$	$1/2t < z \leq 2t$	Not exceed 1/3k	$x \leq 1/8a$	z: Chip thickness	y: Chip width	x: Chip length	$Z \leq 1/2t$	Not over viewing area	$x \leq 1/8a$	$1/2t < z \leq 2t$	Not exceed 1/3k	$x \leq 1/8a$	2.5
z: Chip thickness	y: Chip width	x: Chip length																			
$Z \leq 1/2t$	Not over viewing area	$x \leq 1/8a$																			
$1/2t < z \leq 2t$	Not exceed 1/3k	$x \leq 1/8a$																			
z: Chip thickness	y: Chip width	x: Chip length																			
$Z \leq 1/2t$	Not over viewing area	$x \leq 1/8a$																			
$1/2t < z \leq 2t$	Not exceed 1/3k	$x \leq 1/8a$																			

NO	Item	Criterion	AQL																
06	Glass crack	<p>Symbols :</p> <p>x: Chip length      y: Chip width      z: Chip thickness                      k: Seal width      t: Glass thickness      a: LCD side length                      L: Electrode pad length</p> <p>6.2 Protrusion over terminal :</p> <p>6.2.1 Chip on electrode pad :</p>  <table border="1" data-bbox="381 787 1226 871"> <tr> <td>y: Chip width</td> <td>x: Chip length</td> <td>z: Chip thickness</td> </tr> <tr> <td>y? 0.5mm</td> <td>x? 1/8a</td> <td>0 &lt; z ? t</td> </tr> </table> <p>6.2.2 Non-conductive portion:</p>  <table border="1" data-bbox="446 1228 1226 1333"> <tr> <td>y: Chip width</td> <td>x: Chip length</td> <td>z: Chip thickness</td> </tr> <tr> <td>y? L</td> <td>x? 1/8a</td> <td>0 &lt; z ? t</td> </tr> </table> <p>? If the chipped area touches the ITO terminal, over 2/3 of the ITO must remain and be inspected according to electrode terminal specifications.                      ? If the product will be heat sealed by the customer, the alignment mark not be damaged.</p> <p>6.2.3 Substrate protuberance and internal crack.</p>  <table border="1" data-bbox="763 1585 1226 1711"> <tr> <td>y: width</td> <td>x: length</td> </tr> <tr> <td>y? 1/3L</td> <td>x? a</td> </tr> </table>	y: Chip width	x: Chip length	z: Chip thickness	y? 0.5mm	x? 1/8a	0 < z ? t	y: Chip width	x: Chip length	z: Chip thickness	y? L	x? 1/8a	0 < z ? t	y: width	x: length	y? 1/3L	x? a	2.5
		y: Chip width	x: Chip length	z: Chip thickness															
		y? 0.5mm	x? 1/8a	0 < z ? t															
y: Chip width	x: Chip length	z: Chip thickness																	
y? L	x? 1/8a	0 < z ? t																	
y: width	x: length																		
y? 1/3L	x? a																		

NO	Item	Criterion	AQL
07	Cracked glass	The LCD with extensive crack is not acceptable.	2.5
08	Backlight elements	8.1 Illumination source flickers when lit. 8.2 Spots or scratched that appear when lit must be judged. Using LCD spot, lines and contamination standards. 8.3 Backlight doesn't light or color wrong.	0.65 2.5 0.65
09	Bezel	9.1 Bezel may not have rust, be deformed or have fingerprints, stains or other contamination. 9.2 Bezel must comply with job specifications.	2.5 0.65
10	PCB? COB	10.1 COB seal may not have pinholes larger than 0.2mm or contamination. 10.2 COB seal surface may not have pinholes through to the IC. 10.3 The height of the COB should not exceed the height indicated in the assembly diagram. 10.4 There may not be more than 2mm of sealant outside the seal area on the PCB. And there should be no more than three places. 10.5 No oxidation or contamination PCB terminals. 10.6 Parts on PCB must be the same as on the production characteristic chart. There should be no wrong parts, missing parts or excess parts. 10.7 The jumper on the PCB should conform to the product characteristic chart. 10.8 If solder gets on bezel tab pads, LED pad, zebra pad or screw hold pad, make sure it is smoothed down. 10.9 The Scraping testing standard for Copper Coating of PCB  $X * Y \leq 2\text{mm}^2$	2.5  2.5 0.65 2.5  2.5 0.65  2.5 2.5

11	Soldering	11.1 No un-melted solder paste may be present on the PCB. 11.2 No cold solder joints, missing solder connections, oxidation or icicle. 11.3 No residue or solder balls on PCB. 11.4 No short circuits in components on PCB.	2.5 2.5 2.5 0.65
----	-----------	---	---------------------------

NO	Item	Criterion	AQL
12	General appearance	12.1 No oxidation, contamination, curves or, bends on interface Pin (OLB) of TCP.	2.5
		12.2 No cracks on interface pin (OLB) of TCP.	0.65
		12.3 No contamination, solder residue or solder balls on product.	2.5
		12.4 The IC on the TCP may not be damaged, circuits.	2.5
		12.5 The uppermost edge of the protective strip on the interface pin must be present or look as if it cause the interface pin to sever.	2.5
		12.6 The residual rosin or tin oil of soldering (component or chip component) is not burned into brown or black color.	2.5
		12.7 Sealant on top of the ITO circuit has not hardened.	0.65
		12.8 Pin type must match type in specification sheet.	0.65
		12.9 LCD pin loose or missing pins.	0.65
		12.10 Product packaging must the same as specified on packaging specification sheet.	
		12.11 Product dimension and structure must conform to product specification sheet.	

## **17. Material List of Components for RoHs**

### **17.1 Process for WEEE and Rohs requirement**

- (1) We are now in the process of evaluating/converting to lead-free components/products.
- (2) We use **Sn/Ag/Cu** soldering surface. The surface of pb-free solder is more **rough** than we used before.
- (3) Heat-resistance temp.:  
Reflow : 250? ,30 seconds Max. ;  
Connector soldering wave or hand soldering: 320? , 10 seconds max.
- (4) Temp. curve of reflow, max. Temp.: 235±5? ;  
Recommended customer 's soldering temp. of connector: 280? , 3 seconds.
- (5) The LCD controller T6963c is not available now, Toshiba lead –free version will be in mass production in August.
- (6) How to differentiate pb-free LCM from 2005/Apr to 2005/June, we will add a symbol “#” at the end of module 's part number. The symbol “#” will be removed from 2005/7/1.

### **17.2 Consisting material of LCM**

Please refer to the summarization and supplement of test report as follows:

- PAGE 1/2: Item 1 ~ 12 are Common parts list of current LCM, basically used in standard reflective LCM products.
- PAGE 2/2: Item 13 ~ 23 are optional parts list according to customer's requirement, ex.: backlight components such as CCFL B\L , LED B\L, EL .., ect., or cable connector. Please present this list to customer if these materials are used.
- Each test report is provided by notarization organization, authorized by material suppliers; the none-verified components had sent to notarization organization by Winstar. Quality and manufacturing process of all materials will be kept improving to achieve the requirement of decreasing/totally prohibiting the usage of toxic chemical substances.



LCM COMMON PARTS LIST							
NO.	Material Item	Pb	Cd	Hg	Cr(6+)	PBDEs & PBBs	Controlled Material
1	PCB-FR4	N.D.	N.D.	N.D.	N.D.	N.D.<0.0005%	F<50.0ppm C L <1386ppm Br<50.0ppm I<50.0ppm
2	PCB-GREEN Ink	N.D.	N.D.	N.D.	N.D.	-	Sb<5.0ppm As<10.0ppm Ba<10.0ppm Se<5.0ppm
3	PCB-Plate	N.D.	N.D.	N.D.	N.D.	-	As<12.9ppm Ba<14.5ppm Sb<5.0ppm Se<2.0ppm
4	Bezel Frame	77.3ppm	N.D.	N.D.	N.D.	-	
5	Plastic Frame	24.0ppm	4.8ppm	N.D.	N.D.	N.D.	
6	LCD-Glass	N.D.	N.D.	N.D.	N.D.	N.D.	
7	LCD-Polizer	N.D.	N.D.	N.D.	N.D.	N.D.	
8	Zebra Connector	N.D.	N.D.	N.D.	N.D.	N.D.	
9	Assembly Tape	N.D.	N.D.	N.D.	N.D.	N.D.	
10	Assembly Type Mylar	N.D.	N.D.	N.D.	N.D.	N.D.	
11	Solder Paste	66.7ppm	ND	N.D.	N.D.	-	
12	Packing	ND<90.0ppm	ND<75.0ppm	ND<60.0ppm	ND<60.0ppm	-	Sb<60ppm As<25ppm Ba<1000ppm Se<500ppm

Note: 1. N.D. for Pb , Cd , Hg and Cr means under 2.0ppm.

2. N.D. for PBDEs and PBBs means under 0.0005%.

Page 1/2

LCM COMMON PARTS LIST							
NO.	Material Item	Pb	Cd	Hg	Cr(6+)	PBDEs & PBBs	Controlled Material
13	CCFL-Tube (with inside material)	131ppm	N.D.	3069ppm	N.D.	ND<0.0005%	PBDE N.D. PBB N.D.
14	CCFL-Wire	256ppm	N.D.	N.D.	N.D.	N.D.	
15	CCFL B/L- Diffusion sheet	N.D.	N.D.	N.D.	N.D.	N.D.	As<0.001 Cr<0.012 Cu<0.02 Se<0.006
16	CCFL B/L-Light Guid	N.D.	N.D.	N.D.	N.D.	N.D.	
17	CCFL Tube Cover	N.D.	N.D.	N.D.	N.D.	N.D.	
18	LED B/L- Diffusion sheet	N.D.	N.D.	N.D.	N.D.	N.D.	As<2.0ppm Cr<0.007 Cu<0.31 Se<0.003
19	LED B/L-Light Guide	N.D.	N.D.	N.D.	N.D.	N.D.	
20	LED Lamp	149ppm	N.D.	N.D.	N.D.	N.D.	
21	LED B/L Reflector	N.D.	N.D.	N.D.	N.D.	N.D.	
22	EL B/L	N.D.	N.D.	N.D.	N.D.	N.D.	
23	FFC Cable Wire	N.D.	N.D.	N.D.	N.D.	-	

Note: 1. N.D. for Pb , Cd , Hg and Cr means under 2.0ppm.

2. N.D. for PBDEs and PBBs means under 0.0005%

Page 2/2



winstar

**LCM Sample Estimate Feedback Sheet**

Module Number \_\_\_\_\_

Page: 1

**1? Panel Specification:**

- 1. Panel Type: ? Pass ? NG \_\_\_\_\_
- 2. View Direction: ? Pass ? NG \_\_\_\_\_
- 3. Numbers of Dots: ? Pass ? NG \_\_\_\_\_
- 4. View Area: ? Pass ? NG \_\_\_\_\_
- 5. Active Area: ? Pass ? NG \_\_\_\_\_
- 6. Operating Temperature: ? Pass ? NG \_\_\_\_\_
- 7. Storage Temperature: ? Pass ? NG \_\_\_\_\_
- 8. Others: \_\_\_\_\_

**2? Mechanical Specification**

- 1. PCB Size: ? Pass ? NG \_\_\_\_\_
- 2. Frame Size: ? Pass ? NG \_\_\_\_\_
- 3. Material of Frame: ? Pass ? NG \_\_\_\_\_
- 4. Connector Position: ? Pass ? NG \_\_\_\_\_
- 5. Fix Hole Position: ? Pass ? NG \_\_\_\_\_
- 6. Backlight Position: ? Pass ? NG \_\_\_\_\_
- 7. Thickness of PCB: ? Pass ? NG \_\_\_\_\_
- 8. Height of Frame to PCB: ? Pass ? NG \_\_\_\_\_
- 9. Height of Module: ? Pass ? NG \_\_\_\_\_
- 10. Others: ? Pass ? NG \_\_\_\_\_

**3? Relative Hole Size:**

- 1. Pitch of Connector: ? Pass ? NG \_\_\_\_\_
- 2. Hole size of Connector: ? Pass ? NG \_\_\_\_\_
- 3. Mounting Hole size: ? Pass ? NG \_\_\_\_\_
- 4. Mounting Hole Type: ? Pass ? NG \_\_\_\_\_
- 5. Others: ? Pass ? NG \_\_\_\_\_

**4? Backlight Specification**

- 1. B/L Type: ? Pass ? NG \_\_\_\_\_
- 2. B/L Color: ? Pass ? NG \_\_\_\_\_
- 3. B/L Driving Voltage (Reference for LED Type): ? Pass ? NG \_\_\_\_\_
- 4. B/L Driving Current: ? Pass ? NG \_\_\_\_\_
- 5. Brightness of B/L: ? Pass ? NG \_\_\_\_\_
- 6. B/L Solder Method: ? Pass ? NG \_\_\_\_\_

7. Others:

? Pass      ? NG \_\_\_\_\_

> > **Go to page 2** < <



Customer Signature : \_\_\_\_\_

Date : \_\_\_\_ / \_\_\_\_ / \_\_\_\_